

مؤسسة مثلث الحديد للمقاولات

DELTA STEEL EST. FOR CONTRACTING

DELTA

SYSTEMS

## GENERAL INFORMATION

### DELTA STEEL EST. FOR CONTRACTING

**TYPE OF ORGANIZATION:**

EPC (Engineering Procurement Construction)

**ACTIVITIES:**

Procurement & Trading - Construction & Renovation

**REGISTRATION:**

Commercial Registration as Lie No. 2050099278

**YEARS COMPANY WAS ESTABLISHED::**

2014

**CONTACTS:**

Dammam, Saudi Arabia

[www.deltasystems-ksa.com](http://www.deltasystems-ksa.com)

[info@deltasystems-ksa.com](mailto:info@deltasystems-ksa.com)

# DELTA

---

# SYSTEMS

# GENERAL INFORMATION

<b>DELTA STEEL EST. FOR CONTRACTING</b>	<b>3</b>
<b>CORE VALUES-</b>	<b>4</b>
<b>ORGANIZATION CHART-</b>	<b>5</b>
<b>HOW DO WE DO IT</b>	<b>6</b>
<b>WORKS STAGES</b>	<b>7</b>
- PRE-CONSTRUCTION, PLANNING & SCHEDULING	<b>8</b>
- DESIGN, ESTIMATION, COST CONTROL AND VALUE	<b>9</b>
- PROVIDES SERVICES IN DIFFERENT WIDE RANGE OF PROJECTS THAT	<b>10</b>
- RESPONSIBILITIES DO NOT END WITH THE LAST BRUSH STROKE	<b>11</b>
<b>DELTA ACTIVITIES</b>	<b>12</b>
A- STRUCTURAL ENGENEERING WORKS	<b>13</b>
B- REINFORCED STRUCTURAL WORKS	<b>15</b>
C- STEEL STRUCTURAL WORKS	<b>16</b>
D- INFRASTURCTURE	<b>17</b>
E- OTHER METAL WORKS AND INDUSTRIAL	<b>18</b>
<b>OUR PROJECTS</b>	<b>19</b>
<b>CERTIFICATES</b>	<b>63</b>

**DELTA**  
**SYSTEMS**

2014



Founded in 2014 as a local company; we have been recognized over several years being hard work, dedication, and specialization in General Contracting and trading Activities, covering the scope of design, supply, installation, testing & commissioning.



Our integrated team and process will deliver customers' goals with optimal performance through the project life cycle within budget, time, and top-class quality.

We are not only proud to have the best and the brightest workforce, but also to retain a talented and committed team supporting our long-term plan.



DELTA employees are specialized and skilled engineers, supervisors, and technicians who have proven records for setting exceptional standards in cost control, planning and scheduling, quality assurance and control, and project HSSE.

Our culture of teamwork allows us to work together within the Company, and with our customers to deliver better solutions and collectively accomplish our goals

# DELTA

# SYSTEMS

## Honesty Integrity Reliability Future foresight

The foundation of Delta Construction Company along with Kingdom's ongoing success and development lies in preserving the trust of our customers, employees, shareholders and other third parties. Our flexible, decentralized organization enables each and every one of our employees to exercise the autonomy required by our respective corporate responsibilities in accordance with the distinct characteristics of each location. Given that autonomy, it is essential that we operate in a manner consistent with our values and in compliance with our ethical principles and the law. To achieve that our basic core values guide our behavior in all aspects of our business activity throughout the Saudi Arabia:

## SAFETY

The safety of our employees and the traveling public is everyone's responsibility. Plan safety in every aspect of our work and do not deviate from that plan. Strive for zero incidents. We make the well-being of our people our top priority everywhere we work by nurturing a culture that lives and breathes safety.

**SAFETY FIRST.  
NEVER COMPROMISE**



## QUALITY

Our goal is simply to be the best and to continually improve. This is accomplished through focused teamwork, pride in our work, quality-controlled systems and by hiring and educating the best people we can possibly find.



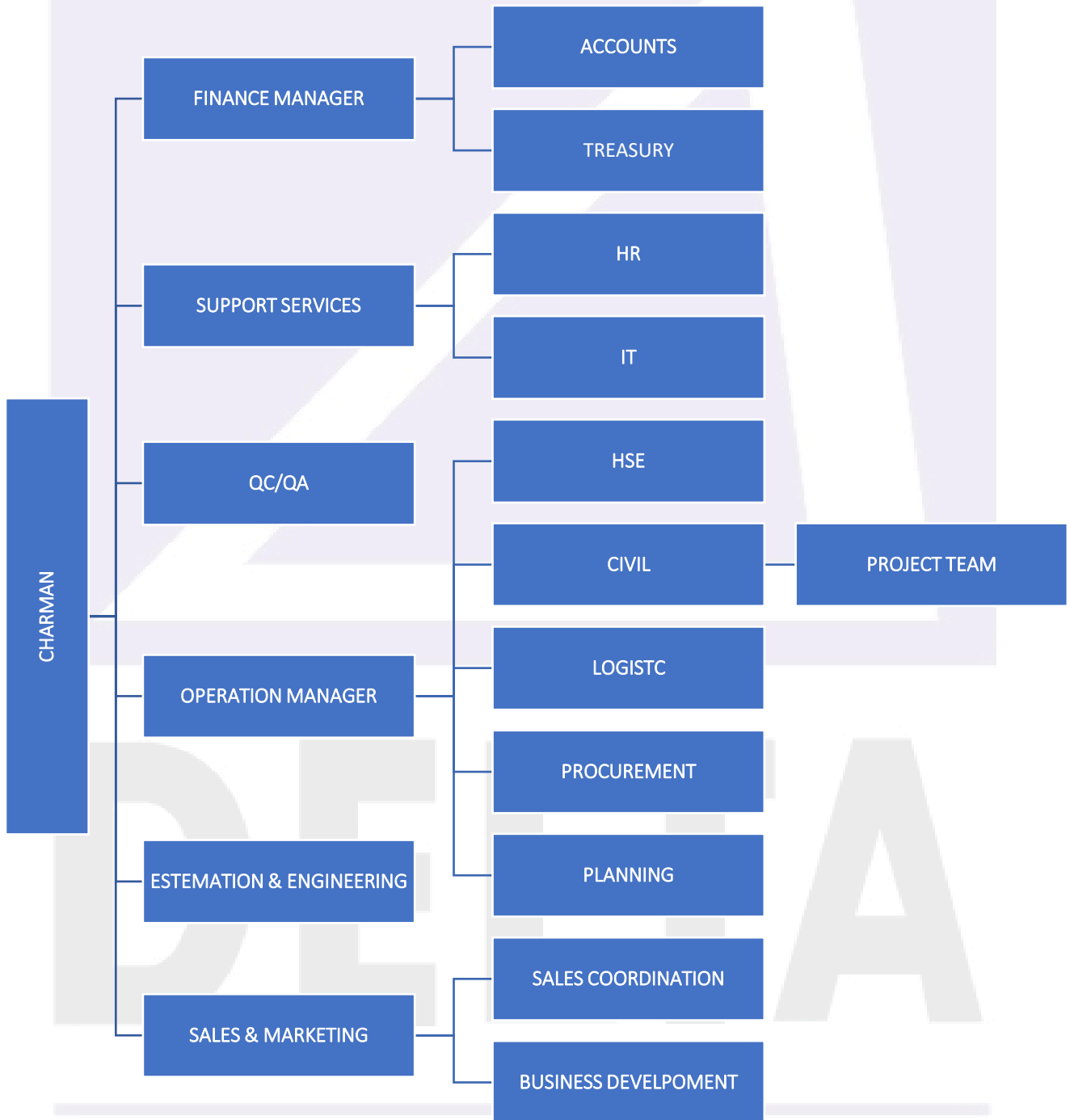
## RESPECT

Respect is the basic rule of behavior that guides every employee in all of his or her actions: respect for oneself and respect for other employees, customers, third parties, the trade unions, society at large, the Group's principles, laws and regulations, the environment fairness and ethics in the broadest sense.



**Respect+**

# ORGANIZATION CHART



## HOW DO WE DO IT

Our organization is built on outstanding client service, strong estimating ability and technical know-how.

We have all the benefits of a reliable organization; a depth of work force, technical competence, reporting procedures, responsiveness, flexibility and a sense that each contract represents a signature project.

As an organization committed to providing excellence in construction, our clients are assured of the most up-to-date construction methods, materials, training, reporting and safety processes

To provide our clients with the best possible services, we establish an open, enthusiastic working relationship with the project stakeholders from the moment we become a part of the project.

To provide our clients with the best possible services, we establish an open, enthusiastic working relationship with the project stakeholders from the moment we become a part of the project.

# DELTA

---

# SYSTEMS

## WORKS STAGES

PRE-CONSTRUCTION, PLANNING & SCHEDULING



DESIGN, ESTIMATION, COST CONTROL AND VALUE ENGINEERING.



PROVIDES SERVICES IN DIFFERENT WIDE RANGE OF PROJECTS THAT INCLUDE.



RESPONSIBILTIES DO NOT END WITH THE LAST BRUSH STROKE.

## PRE-CONSTRUCTION, PLANNING & SCHEDULING



Liaise with the Owner and Owner's representatives to share our experience



Discussing alternatives to maximize the overall benefit and deliver optimal solution



Advise on the specification of construction techniques and materials



Review plans and specifications



Prepare and maintain project schedules



Relate schedules to cash flow requirements



Communicate scheduling Impacts as each phase progresses.



DELTA  
SYSTEMS

# WORKS STAGES

## DESIGN, ESTIMATION, COST CONTROL AND VALUE ENGINEERING.



Prepare base design, detailed engineering & shop drawings



Establish estimating and cost control systems and procedures



Prepare budget estimate



Provide value engineering suggestions



Provide cost to benefit analysis



Review budget estimates to reflect design alternatives

DELTA  
SYSTEMS

## WORKS STAGES

- PROVIDES SERVICES IN DIFFERENT WIDE RANGE OF PROJECTS THAT INCLUDE.

- General Contracting & Civil construction.
- Concrete repair and waterproofing.
- Builders pre-engineered and steel buildings.
- Renovation & refurbishment of commercial buildings and industrial facilities.
- Infrastructure & Networks.
- Architectural finishing works.

DELTA

---

SYSTEMS

- RESPONSIBILITIES DO NOT END WITH THE LAST BRUSH STROKE.

We tie up the loose ends, document the final changes, and stand by our work  
Specifically we:



Prepare & Complete All Punch List Items.



Certificate of Completion .



Finalize As-Built drawings.



Guarantees/Warranties certificates.

# DELTA

# SYSTEMS

A- STRUCTURAL ENGEENIRING WORKS.

B- REINFORCED STRUCTURAL WORKS.

C- STEEL STRUCTURAL WORKS.

D- INFRASTURCTURE.

E- OTHER METAL WORKS AND INDUSTRIAL.

# DELTA

---

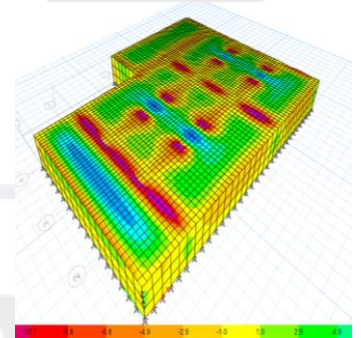
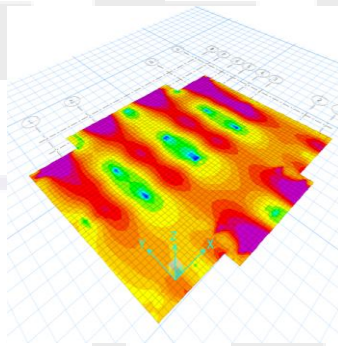
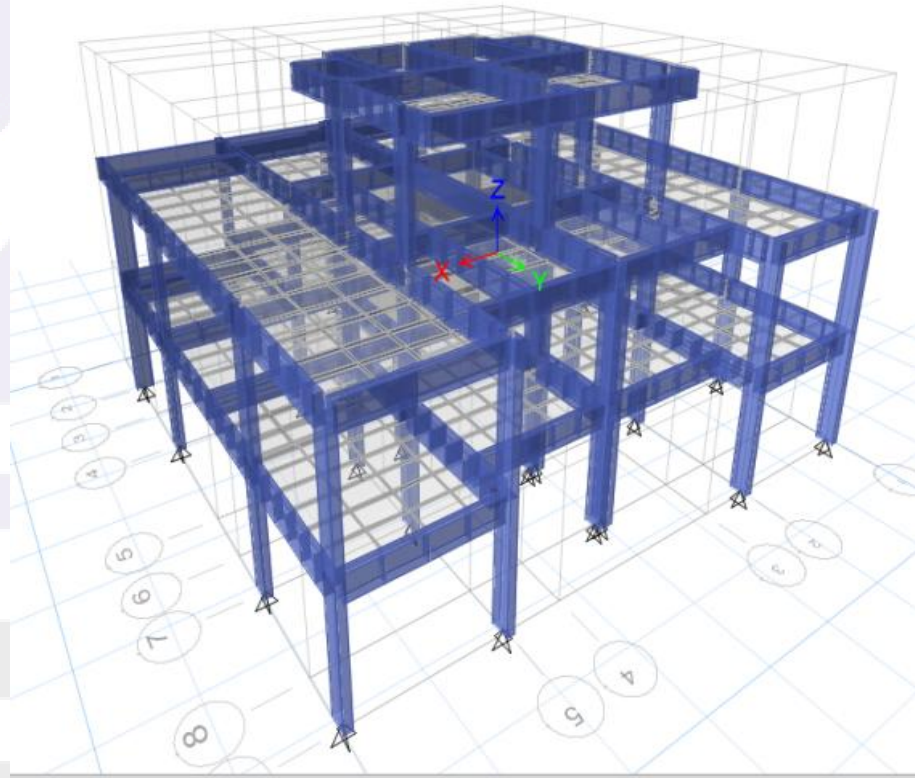
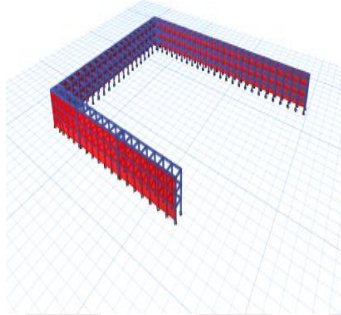
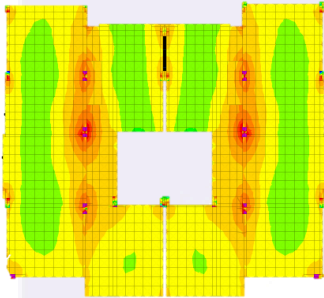
# SYSTEMS

# A- STRUCTURAL ENGINEERING WORKS

Value engineering has been our core value in delivering complete solutions and we believe in providing solutions, not just products.

Our teams of qualified, experienced engineers and technicians can create and build to client specifications, whatever the challenge. Our clients are ensured the highest levels of product quality and workmanship including on-time completion

Our experienced staff is always ready to take up new challenges, therefore proving our company as one of the best in the region.



# A- STRUCTURAL ENGINEERING WORKS

## Applications

Rather than light weight structures like tubular structures, Delta Steel involves in Fabrication of Heavy Structures Like:

- Steel Structure of building
- Steel Structure of hangers
- Steel structure of Helipad
- Steel structure for Bridge
- Heavy Crane Girder
- Power Plant Structure
- Cement Plant Structure etc.

## CODES

### Design, Engineering & Detailing

State of the art production facility is aided with the most modern designing setup.

TEKLA Detailing

AutoCAD 3D

Staad Pro

Etabs

SAAP 2000

AISC

MBS

ANSI

Steel Construction Manual

Low Rise Building Systems Manual (MBMA – Metal Building Manufacturer's Association Inc.)

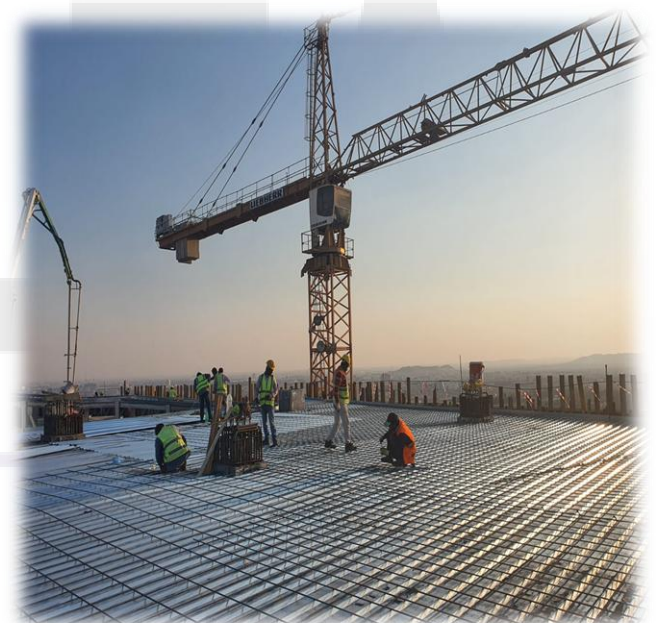
Manual of Steel Construction, Allowable Stress Design (AISC – American Institute of Steel Construction Inc.)

Cold Formed Steel Design Manual (AISI – American Iron and Steel Institute)

Structural Welding Code - Steel (AWS – American Welding Society)

# B- REINFORCED STRUCTURAL WORKS

We pride ourselves of vast experience in the industrial buildings where we have constructed residential buildings, and commercial buildings.



# C- STEEL STRUCTURAL WORKS

We have experience with skilled team for fabrication and erection all kinds of steel structure to achieve various steel projects with the required quality



# SYSTEMS

## D- INFRASTRUCTURE

We have experience with skilled team for fabrication and erection all kinds of steel structure to achieve various steel projects with the required quality .

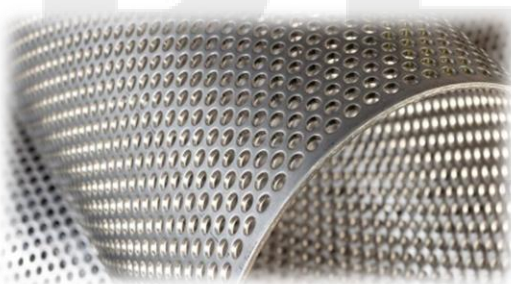


## E. OTHER METAL WORKS AND INDUSTRIAL

### Trading Activities



### Manufacturing the expanded metal sheet and perforated sheet



# SYSTEMS

# Our Projects

Year	Project	Client
2025	<ul style="list-style-type: none"> <li>-Intermaint plant factory At Riyadh Area, Turn Key project.</li> <li>-Erection of steel structure for Nesto Mall At hasa Area</li> <li>-Civil work Clinker cement plant – Simona CDI Jubail Area</li> <li>-Civil works foundation for steel structure fans at Rabigh Cement Factory .</li> <li>-Steel structure work at Aramco</li> <li>-Steel structure work composite columns At Amalla Area RSG with Masah CO</li> <li>-Steel structure building for Shura Island AT RSG with Kifah Co</li> <li>-Steel structure work At Amalla area with Rawabi Co .</li> <li>-Steel structure for chiller yard at inshaat co</li> <li>-Steel structure works –SNT Group Dammam</li> </ul>	<ul style="list-style-type: none"> <li>- Intermaint Co</li> <li>- Netso Mall</li> <li>- Sinoma CDI</li> <li>- Saudi Cement CO</li> <li>- Eastern Cement Co</li> <li>- First Gulf Co -Aramco</li> <li>- RSG</li> <li>- RSG</li> <li>- RSG</li> <li>- Inshaat Co.</li> <li>- SNT Group</li> </ul>
On going 2025	<ul style="list-style-type: none"> <li>-Civil work Nalco Co</li> <li>-Steel structure works Nesto Dammam</li> <li>- Steel structure building for Shura Island AT RSG with Kifah Co</li> <li>-Steel structure work and civil work with - ALNASSAR Co at Aramco area –Dharan</li> <li>-Civil works foundation for steel structure fans at -Saudi Cement Factory –Hasa.</li> <li>-Metal fabrication Aramco Area Ras Tanura , khonini Area</li> <li>-Steel structure of elevators at Qadya area</li> </ul>	<ul style="list-style-type: none"> <li>- NALCO</li> <li>- Netso Mall</li> <li>- RSG</li> <li>- Al Nassar Co-Aramco</li> <li>- Sinoma Overseaes</li> <li>- Saudi Cement CO</li> <li>- Khonini ARAMCO</li> <li>- Qadya</li> </ul>

# Our Projects

Year	Project	Client
2024	-Erection of steel structure for Nesto Mall At hasa Area	- Netso Mall
	-Civil work Clinker cement plant – Simona CDI Jubail Area	- Sinoma CDI
	-Civil works foundation for steel structure fans at Saudi Cement Factory -Hasa	- Sinoma Overseas, Saudi Cement CO
	-Civil works foundation for steel structure fans at Rabigh Cement Factory	- Eastern Cement Co
	-Steel structure At Jeddah Red Sea museum .	- First Gulf Co
	-Steel structure work and civil work with ALNASSAR Co at Aramco area –Dharan	- Al Nassar Co-Aramco
	- steel structure work composite columns At Amalla Area	- RSG
	-Steel structure building for Shura Island AT RSG	- RSG
	-Steel structure work At Amalla area	- RSG
	-Steel structure works At SEC at Najran area	- SEC
-Civil work & Steel structure hangers at ICR	- ICR	
2023	-Steel structure at Red Sea Airport	- RSG
	-Civil works, Steel structure Crusher building at SPCC bisha area, <b>Turn Key project.</b>	- SPCC
	-Civil work & Steel structure hangers at ICR, <b>Turn Key project.</b>	- ICR
	-Civil works at Saudi cement factory hasa, <b>Turn Key project.</b>	- Saudi Cement Fac
	-Civil work at eastern cement factory, <b>Turn Key project.</b>	- Eastern cement Fac
2022	-Build new factories <b>Turn Key project.</b>	- Bartec middle East
	-Build new factories <b>Turn Key project.</b>	- Al Shamela Group
	-Steel structure work Al salam hospital	- Al salam Medical Group
	-Steel structure for the hangers Murjan Co	- Murjan Co
	-Civil work & Steel structure hangers at IC, <b>Turn Key project.</b>	- ICR
	-Civil work & Steel structure at almoosa hospital	- Al Moosa Medical Group
-Steel structure of ATT building at Red sea Airport	- RSG	
<b>AL –Turki fuel station-Dammam City</b>	- Tasehlat Co	

## Our Projects

Year	Project	Client
2021	<ul style="list-style-type: none"> <li>-Steel structure works almoosa hospital</li> <li>-Reinforced concrete work for hankers</li> <li>-Civil work at ICR</li> </ul>	<ul style="list-style-type: none"> <li>- Al Moosa Medical Group</li> <li>- ICR</li> </ul>
	<ul style="list-style-type: none"> <li>-Steel structure at salam hospital</li> <li>-Metal fabrication al mousat hospital</li> <li>-Civil works and Steel structure work at ATRIC Factory</li> <li>-Build new factories</li> </ul>	<ul style="list-style-type: none"> <li>- Al Salam Medical Group</li> <li>- Al Mousat Medical Group</li> <li>- ATRIC</li> <li>- Al Shamela Group</li> </ul>
2020	<ul style="list-style-type: none"> <li>-Steel structure helped at al moosa hospital</li> <li>-Concrete work of helipad at almossa hospital</li> <li>-Hanker of ICR</li> </ul>	<ul style="list-style-type: none"> <li>- Al Moosa Medical Group</li> <li>- Al Moosa Medical Group</li> <li>- ICR</li> </ul>
	<ul style="list-style-type: none"> <li>-Civil works of steel structure at mujan group</li> <li>-Steel fabrication for bartec group</li> <li>-Steel structure and stainless at Ajdan tower</li> </ul>	<ul style="list-style-type: none"> <li>- Murjan Group</li> <li>- Bartec middle East</li> <li>- Ajdan Group</li> </ul>
2014-2019	<ul style="list-style-type: none"> <li>-Steel structure building</li> <li>-Steel fabrication</li> <li>-Reinforced concrete works</li> <li>-Infra structure</li> </ul>	<ul style="list-style-type: none"> <li>- Philips Co</li> <li>- HHI</li> <li>- Samsung Eng.</li> <li>- MKK group</li> </ul>
	<ul style="list-style-type: none"> <li>-Building Hanker and concrete works</li> <li>-Franc tanks</li> <li>-Powder coating lines</li> <li>-Sandblasting rooms</li> <li>-Powder coating production lines</li> <li>-LPG tanks</li> <li>-Erection the machines equipment's</li> <li>-Steel structure for hangers</li> </ul>	<ul style="list-style-type: none"> <li>- Nesma group</li> <li>- Delta Turkish</li> <li>- Suwaidi industry</li> <li>- STC Group</li> <li>- Wescosa Co</li> <li>- Amantit Group</li> <li>- GE oil and Gas</li> <li>- Wood Group</li> <li>- Alrajhi Group</li> <li>- Attieh Steel</li> </ul>

# Our Projects

-Intermaint plant factory –Turn Key project  
– Riaydh City –KSA  
Year : 2025



Civil works , finishing works and installation of steel structure of hanker  
Delta activity as :

- ❖ Surveying , excavation , backfilling work
- ❖ sub-structure : civil works ( footings , beams , columns , grade slabs )
- ❖ super structure : finishing works ( block works , plastering , painting , gypsum board , aluminum works , doors , tilling , etc )
- ❖ steel erection for steel pre-engineering built-up
- ❖ facade cladding ( composite aluminum cladding , sandwich panel )
- ❖ steel metal works ( steel fence for modon , sliding doors , rolling doors )
- ❖ sceco room , under ground tanks
- ❖ site works ( asphalt works , curbstone , interlock )
- ❖ electrical and mechanical works

## Our Projects

-Steel Structure works building for Fuel Tank canopies At SEC  
– Najran City –KSA  
Year : 2024



Civil works & Steel structure works, Design, supply, and installing with all fabrication and erection works,  
Delta activity as :

- ❖ Steel fabrication works.
- ❖ Steel structure of canopies as per approved design and shop drawing

DELTA  
SYSTEMS

## Our Projects

-Steel Structure works building for Shura island At RSG  
– Amluj city  
Year : 2024-2025



البحر الأحمر العالمية  
Red Sea Global



Civil works & Steel structure works, Design, supply, and installing with all fabrication and erection works,

Delta activity as :

- ❖ Steel fabrication works.
- ❖ Steel structure building as per approved design and shop drawing
- ❖ Fire rating for 2 hr – approved systems from RSG
- ❖ Supply and installation for steel structure building around 150 building

DELTA  
SYSTEMS

# Our Projects

-Steel Structure works building for Shura island At RSG  
– Amluj city  
Year : 2024-2025



البحر الأحمر الدولية  
Red Sea Global

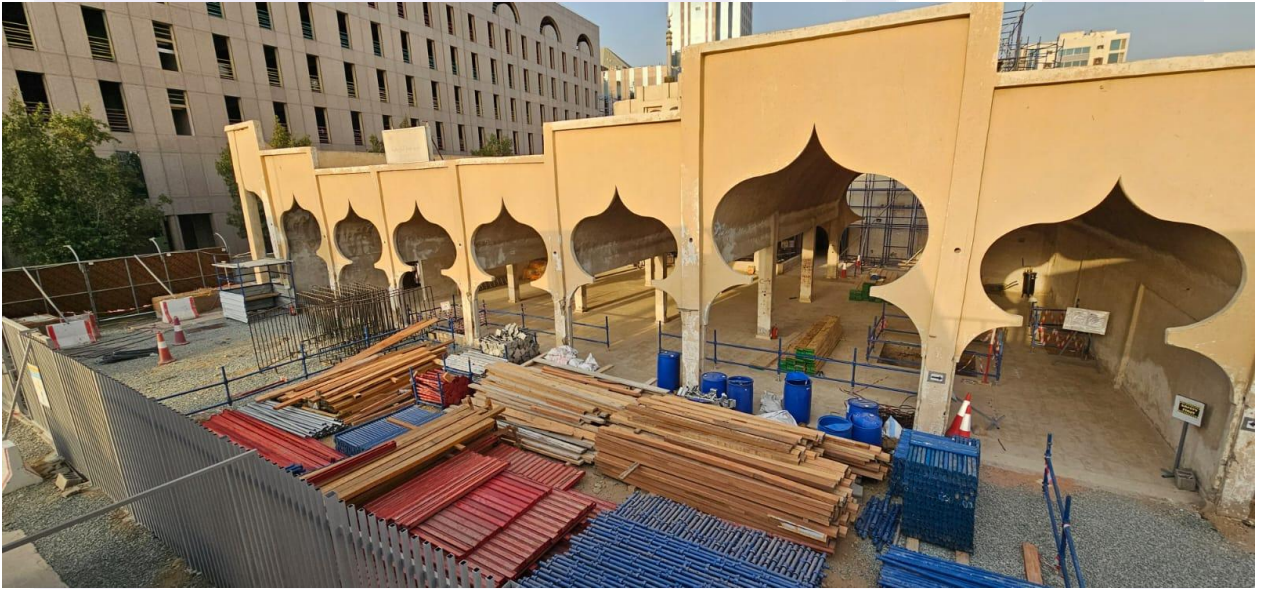


## Our Projects

-Steel Structure of Red Sea Museum – Jeddah City  
Year : 2024

FGC

FIRST GULF COMPANY  
الشركة الخليجية الأولى



Civil works & Steel structure works, Design, supply, and installing with all fabrication and erection works,

Delta activity as :

- ❖ Steel fabrication works.
- ❖ Civil work for the base of columns
- ❖ Steel handrail

DELTA

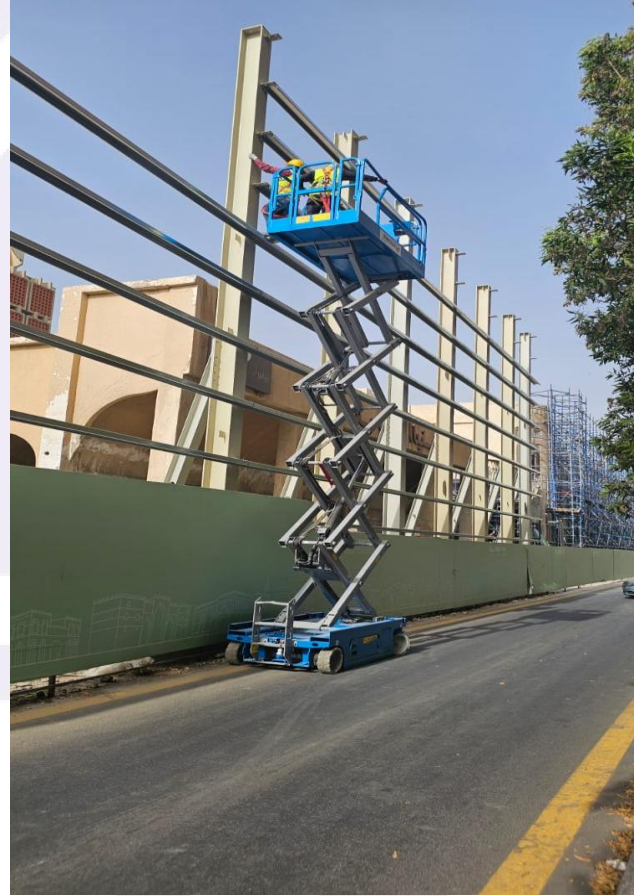
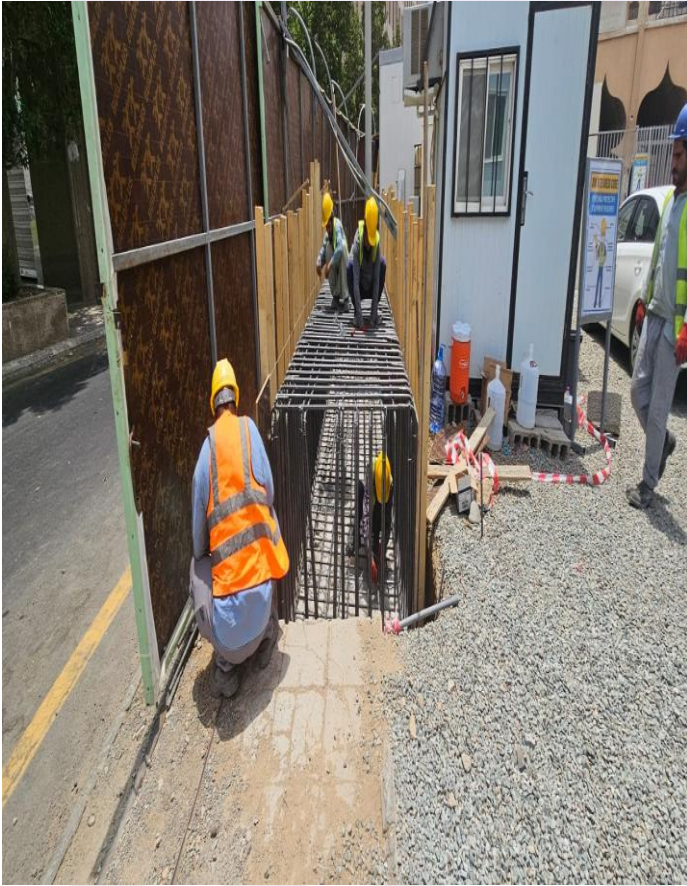
SYSTEMS

# Our Projects

-Steel Structure of Red Sea Museum – Jeddah City  
Year : 2024



FIRST GULF COMPANY  
الشركة الخليجية الأولى



## Our Projects

.EPCC 10,000 TPD Clinker cement plant –  
Eastern Province cement company

Year : 2025-2024



Eastern Province Cement Company - Line 5, 10000TPD Project



All Civil works in new Line for EPCC 10,000 TPD Clinker cement plant – Eastern Province cement company

Delta activity as :

- ❖ Site works.,
- ❖ Excavation works
- ❖ Backfilling works
- ❖ Substructure
- ❖ All related Civil works

Total reinforced concrete cubic mt around 40 thousand .

# Our Projects

.EPCC 10,000 TPD Clinker cement plant –  
Eastern Province cement company  
Year : 2025-2024



الأربعاء، ٤ سبتمبر، ٢٠٢٤ ١٥:٣٨:٤٦  
Abdalla

# Our Projects

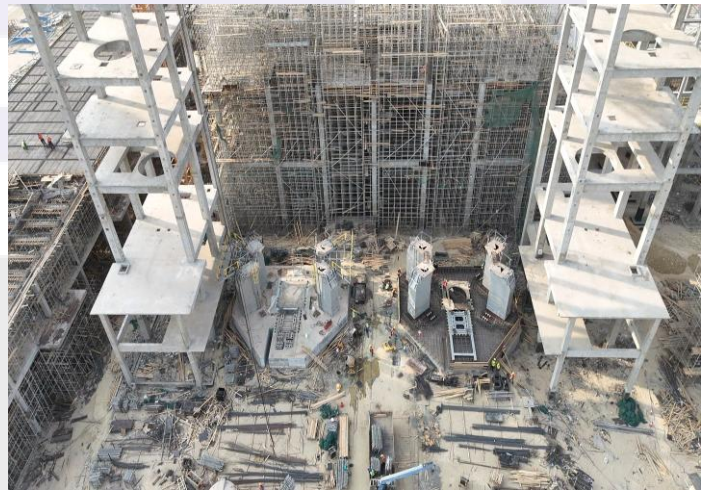
.EPCC 10,000 TPD Clinker cement plant –  
Eastern Province cement company  
Year : 2025-2024



# SYSTEMS

# Our Projects

.EPCC 10,000 TPD Clinker cement plant –  
Eastern Province cement company  
Year : 2025-2024



## Our Projects

### SOUTH PLANT CEMENT COMPANY SPCC, BISHA CRUSHER BUILDING.

Year : 2023



All Civil works in crusher building ,conveyor and transfer tower , total concrete volume more than 2500 m3 with huge retaining wall , height 14 m .

Delta activity as :

- ❖ Site works.,
- ❖ Excavation works
- ❖ Backfilling works
- ❖ Substructure
- ❖ superstructure
- ❖ All related Civil works

# DELTA SYSTEMS

## Our Projects

### SOUTH PLANT CEMENT COMPANY SPCC, BISHA CRUSHER BUILDING.

Year : 2023



SOUTH PLANT CEMENT COMPANY SPCC, BISHA  
CRUSHER BUILDING.

Year : 2023



## Our Projects

SOUTH PLANT CEMENT COMPANY SPCC, BISHA  
Saw cut and demolition works  
Year : 2022



Cutting required concrete members like slabs ,drop beams and walls using saw cut machine , wire cut machine and using crane to remove the big concrete members.



# Our Projects

Saudi Cement Company

Year : 2023

الإسمنت لسعوديه  
SAUDI CEMENT



- ❖ Cantilever walkway slab strengthening to accommodate additional load of 50 tons by using self-consolidating (SCC)
- ❖ Retaining walls and footings
- ❖ Several civil works



# Our Projects

Saudi Cement Company

Year : 2023

الإسمنت لسعوديه  
SAUDI CEMENT



SYSTEMS

## Our Projects

Industrial Chemicals & Resins Co.

Year : 2022



Civil works and Steel structure , supply and installing with all fabrication and erection works,  
Total B.U.A = 6000 m2.

Delta activity as :

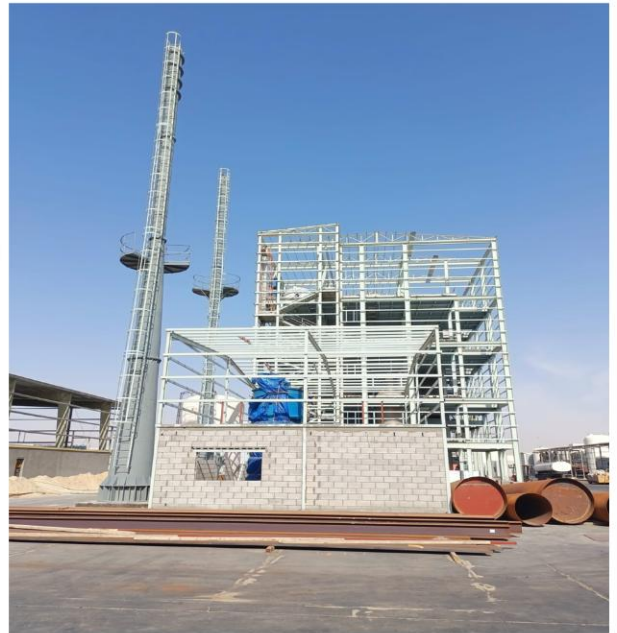
- ❖ Site works.,
- ❖ Substructure
- ❖ Civil works
- ❖ Steel structure



# Our Projects

Industrial Chemicals & Resins Co.

Year : 2022



AL –Turki fuel station-Dammam City  
Year : 2022



Steel structure works, Design, supply, and installing with all fabrication and erection works,  
Delta activity as :

- ❖ Steel fabrication works.
- ❖ Steel handrail

# DELTA

---

# SYSTEMS

AL –Turki fuel station-Dammam City  
Year : 2022



AL –Turki fuel station-Dammam City  
Year : 2022



AL –Turki fuel station-Dammam City  
Year : 2022



Red sea airport project  
Year : 2023



Steel structure and civil works , supply and installing with all fabrication and erection works,

Delta steel works:

- ❖ Steel structure works for canopy in lower floor with approximately area 1200 m<sup>2</sup>
- ❖ Reinforced and steel structure for utility building with approximately area 2300 m<sup>2</sup>
- ❖ Steel structure works for roof floor with area 2600 m<sup>2</sup>

# DELTA SYSTEMS

# Our Projects

**Red sea airport project**  
**Year : 2023**



# Our Projects

Red sea airport project  
Year : 2023



### AL Salam Hospital –Khobar City (KSA) Year : 2020



Steel structure work , supply and installing with all fabrication and erection works,

Also supply and installing all Stainless-Steel elevators Doors Frames for the hospital , in addition to supply and installation stainless steel wall cladding For the project in Khobar under scope of Ibrahim Ismael general contracting .

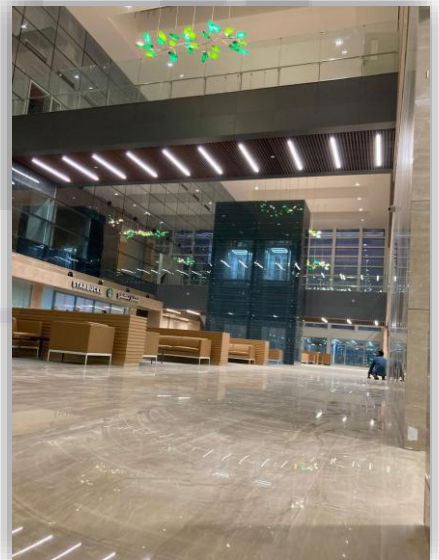
Delta activity as :

- ❖ Steel structure for the louvers in 4<sup>th</sup> floor
- ❖ Steel structure for the emergency canopy in ground floor
- ❖ Cladding works
- ❖ Steel and aluminum louvers in service building
- ❖ Stainless steel handrail with glasses
- ❖ Stainless steel cladding

# DELTA SYSTEMS

# Our Projects

AL Salam Hospital –Khubar City (KSA)  
Year : 2020



AL Salam Hospital –Khubar City (KSA)  
Year : 2020



# SYSTEMS

Arabian Tile Company – ARTIC  
Year : 2021



# ARTIC DAMMAM FACTORY



Civil works and Steel structure work , supply and installing with all fabrication and erection works,

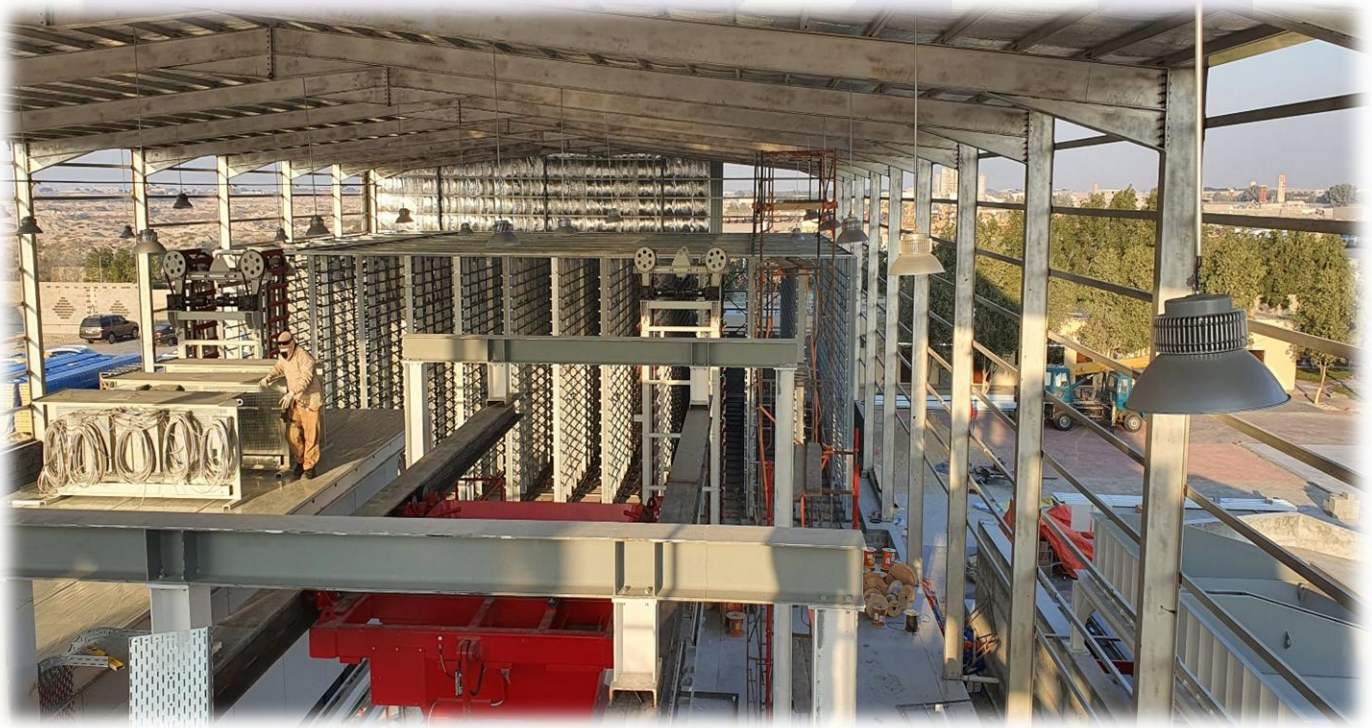
Delta activity as :

- ❖ Site works.,
- ❖ Substructure
- ❖ Civil works
- ❖ Steel structure for the dryer room
- ❖ Supply and erection the Water, Air Piping system
- ❖ erection the equipment's and machines

# DELTA SYSTEMS

# Our Projects

Arabian Tile Company – ARTIC  
Year : 2021



# Our Projects

Arabian Tile Company – ARTIC  
Year : 2021



NESMA & PARTNERS  
Year 2018 -2019

**Nesma**  
& Partners



Initiate a 5 warehouses with Area 5300 m2 built up area including all Steel and Civil works Also Provided warehouses with shelves , Doors , ...etc as per request for Fadhili labor camp in Fadhili under scope of MMK contracting co.



# SYSTEMS

# Our Projects

NESMA & PARTNERS  
Year 2018 -2019

**Nesma**  
& Partners

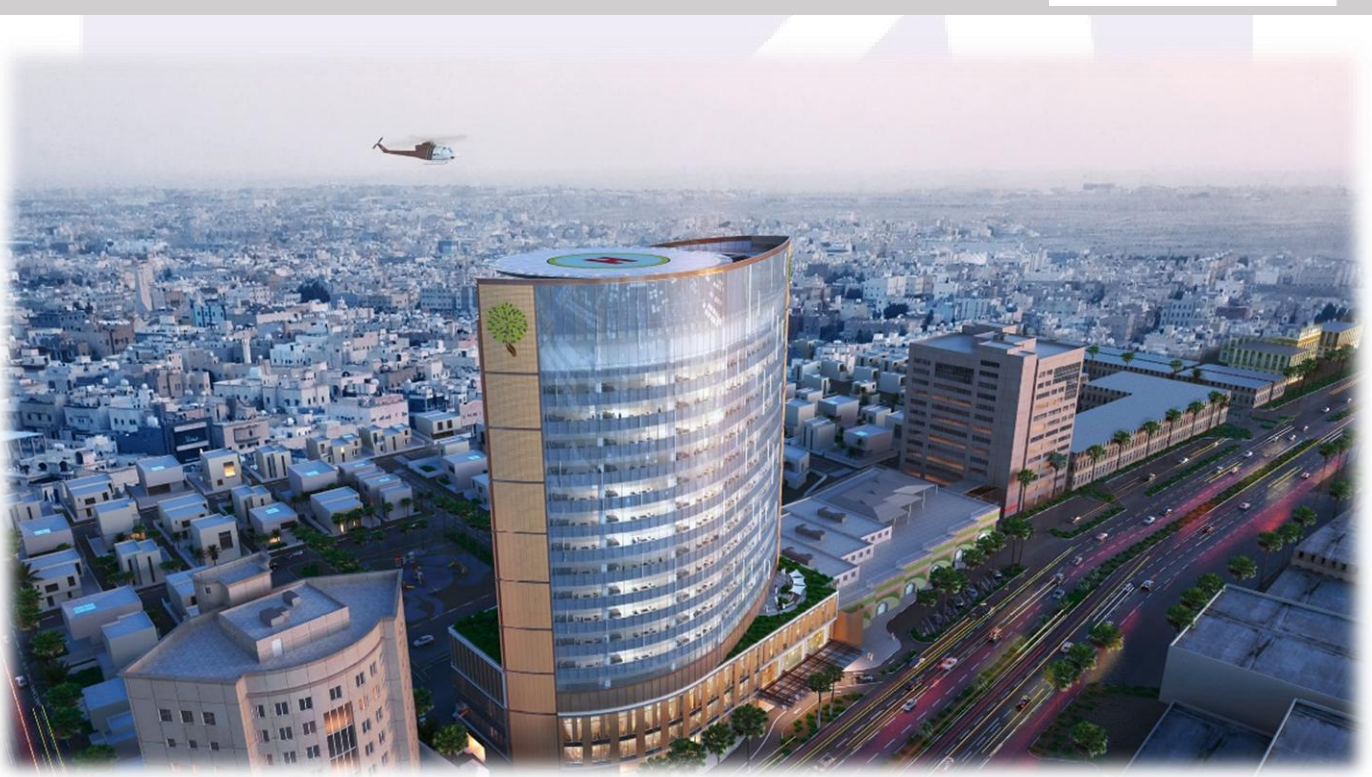


SYSTEMS

### ALMOOSA SPECIALIST HOSPITAL-Hasa city (KSA)-north tower Year 2020-2021



مستشفى المواسي التخصصي  
Almoosa Specialist Hospital



- ❖ Fabricate ,Supply , and installation the hospital Helipad, RAMP and BUILDING MAINTENANCE UNIT SYSTEMS total weight more than 300 Ton .
- ❖ Steel Structure works for 4000 m2 built up area , in many floors
- ❖ Fabricate ,Supply , and installation Elevators steel structure for Shilnder co
- ❖ Fabricate ,Supply , and installation more than 100 type of cladding and mounting accessories for ALMOOSA hospital north tower project in Huffof under scope of MASA and Contracting co.
- ❖ Erection the entrance canopy of the hospital.
- ❖ Steel and aluminium louvers for the services building and parking.
- ❖ Fabricate ,supply and erection the connection bridge between hospital and north tower hospital .
- ❖ Steel structure for the cooling tower.

# SYSTEMS

# Our Projects

ALMOOSA SPECIALIST HOSPITAL-Hasa city (KSA)-north  
tower  
Year 2020-2021



مستشفى المواسي التخصصي  
Almoosa Specialist Hospital



# Our Projects

ALMOOSA SPECIALIST HOSPITAL-Hasa city (KSA)-north tower  
Year 2020-2021



مستشفى الموسى التخصصي  
Almoosa Specialist Hospital



## ALMOOSA SPECIALIST HOSPITAL-Hasa city (KSA)- north tower Year 2020-2021



مستشفى المواسي التخصصي  
Almoosa Specialist Hospital

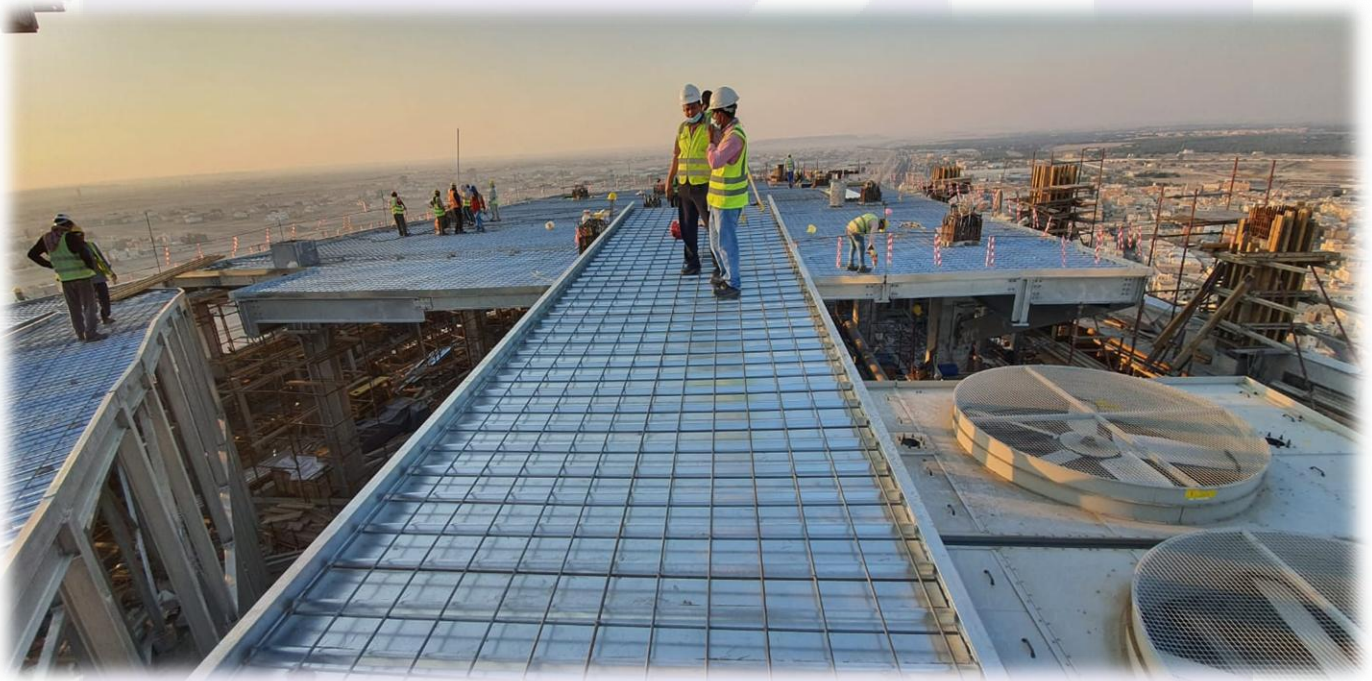


# Our Projects

ALMOOSA SPECIALIST HOSPITAL-Hasa city (KSA)-north  
tower  
Year 2020-2021



مستشفى الموسى التخصصي  
Almoosa Specialist Hospital

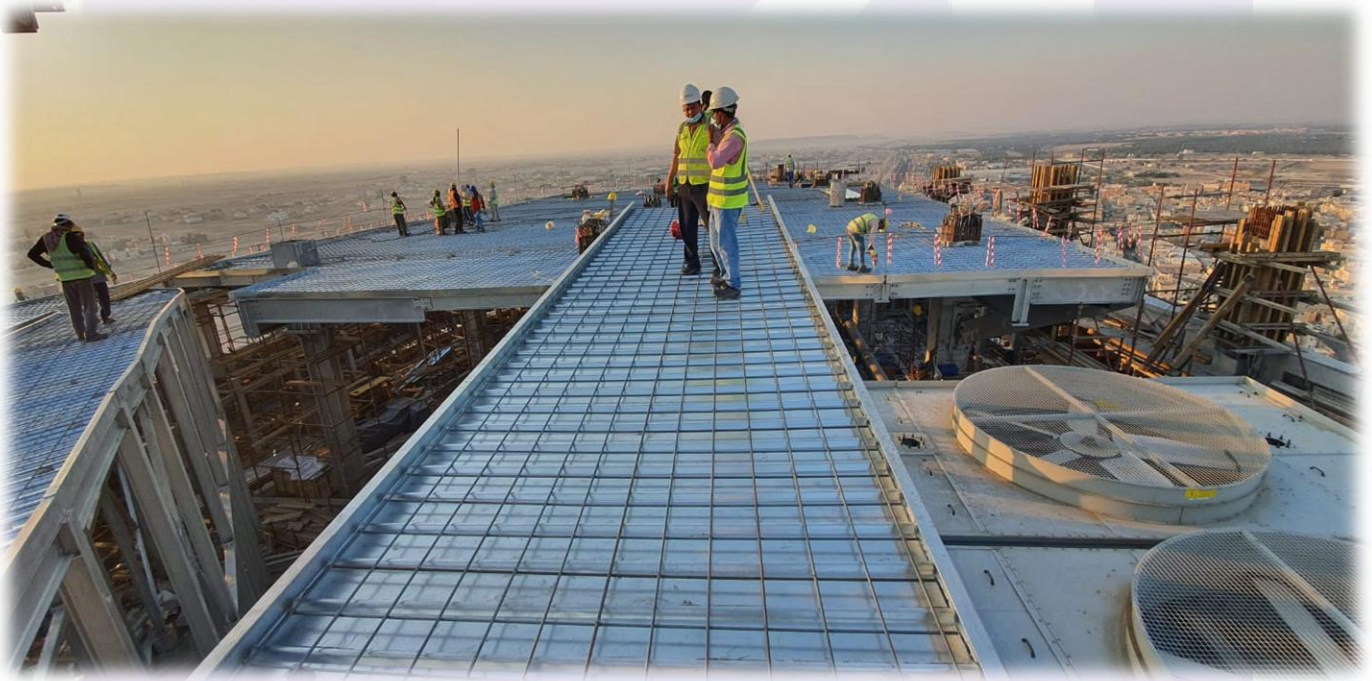


# Our Projects

ALMOOSA SPECIALIST HOSPITAL-Hasa city (KSA)-north  
tower  
Year 2020-2021



مستشفى الموسى التخصصي  
Almoosa Specialist Hospital



### AL -Mouwasat medical service Co.-Dammam City Year : 2021



Steel structure work , supply and installing with all fabrication and erection works,  
under scope of Building project Co  
Delta activity as :

- ❖ Steel fabrication works .
- ❖ Steel handrail

# DELTA

---

# SYSTEMS

Ajdan Twoer  
Year : 2020- 2021



Steel structure work , supply and installing with all fabrication and erection works,

Also supply and installing all Stainless-Steel elevators Doors Frames the for the tower, in addition to supply and installation stainless steel wall cladding For project in Khobar under scope of Ismael Est. for Contracting co.

Delta activity as :

- ❖ Steel and aluminum louvers in service building and parking area
- ❖ Stainless steel works and fountains.
- ❖ Aluminum feature wall with laser cut. Fabricated and powder coated Finish
- ❖ Stainless steel for the building

DELTA  
SYSTEMS

# Our Projects

Ajdan Twoer  
Year : 2020- 2021



# SYSTEMS

### Unipoles H-Shape for Display screens Year : 2023



Steel structure work , supply and installing with all fabrication and erection works, for uni poles at Aramco Plant  
Delta activity as :

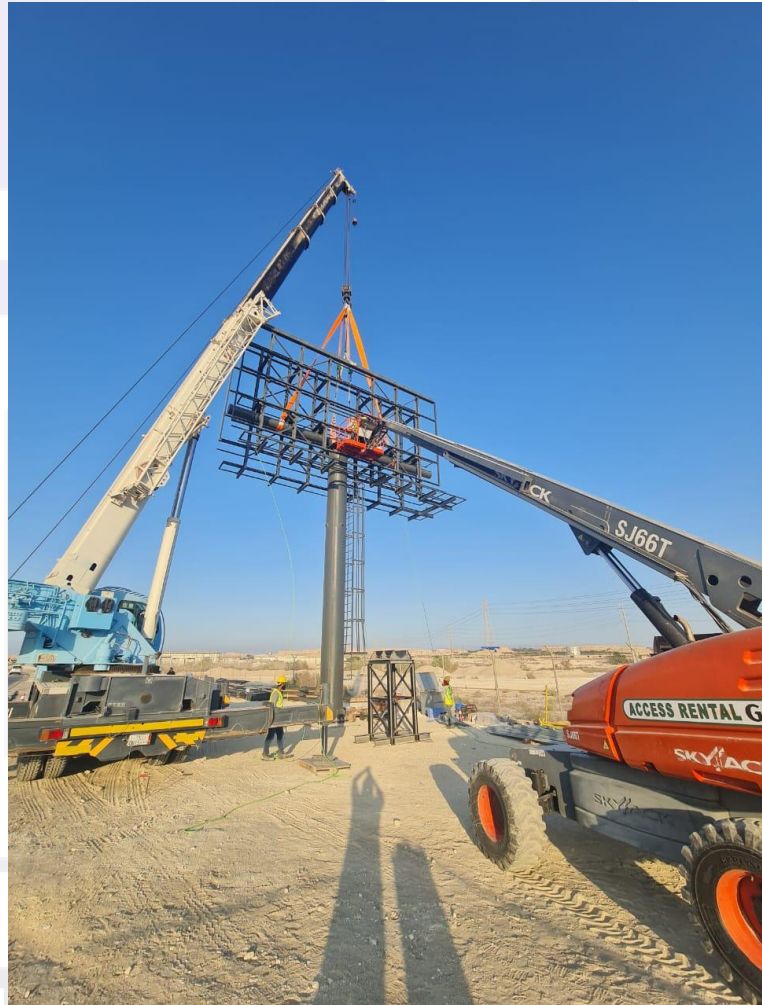
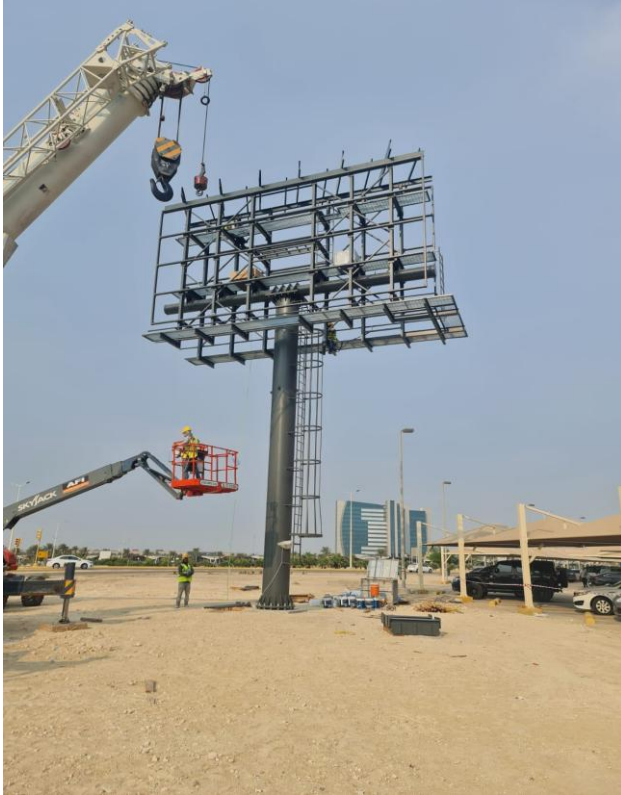
- ❖ Fabrication of Steel structure of Unio pole as H shape for display screens
- ❖ Erection and installation of Uni poles total Number is 4 Set .



# DELTA

# SYSTEMS

## Unipoles H-Shape for Display screens Year : 2023





Certificate

DELTA

---

SYSTEMS



# CERTIFICATE

*This is to certify that the Quality Management System of*  
**DELTASTEELST. FORCONTACTING**  
7824 Building NO second, No 3249 Al Amir MihsmmrBin Fahad road Ash Shati Al  
Garbi District Post Code32413, Dammam, KSA

*has been assessed and found to conform to the requirements of*

## ISO 9001:2015

*This Certificate is valid for the following scope*

**Steel Structure, Building Steel Structure, Metal  
Fabrication, Buildings and Concrete Jobs**

Certificate No.	:AMER34911	
Original Issue Date	:08/11/2025	
Issue Date	:08/11/2025	R0
Surveillance/ Expiry Date	:07/11/2026	
Recertification Date	:07/11/2028	



Director

**AMERICO QUALITY STANDARDS REGISTECH PVT. LTD**

USA Office: 1603 Capitol Ave, Suite #402E, Majestic Building, Cheyenne, WY 82001

India Office: Office no 407, Commerce Center, Pimple Saudagar, Pune, 411027



CM-MS-7842



SCA

الهيئة السعودية للمقاولين  
Saudi Contractors Authority

تاريخ الإصدار : 05 Oct, 2022

شهادة  
عضوية  
مقاولطبقاً لتنظيم الهيئة السعودية للمقاولين فإننا نشهد بأن  
مؤسسة مثلث الحديد للمقاولات

رقم العضوية : 275027501

مسجل في عضوية الهيئة حسب الإجراءات المتبعة و قد أعطى هذه الشهادة بناء على ذلك

تاريخ نهاية العضوية 2023 October 5

الرجاء التحقق من صحة وملاحية الشهادة عبر زيارة الرابط <https://muqawil.org>

م. ثابت مبارك ال سويد

الأمين العام  
الهيئة السعودية للمقاولينرقم الهاتف: +966920000968  
البريد الإلكتروني: info@sca.sa

sca.sa

صدرت هذه الشهادة من الهيئة السعودية للمقاولين و تظل ملكا للهيئة و يجب  
إعادتها للجهة المصدرة في حال إلغاء العضوية لأي سبب كان  
لمزيد من المعلومات عن الشهادة يرجى زيارة موقعنا  
www.muqawil.org/ar/contractors على الرقم +966920000968  
جميع الحقوق محفوظة للهيئة  
السعودية للمقاولين

الهيئة السعودية للمقاولين  
مبنى رقم 3141 طريق أس بن مالك -  
المنطقة  
الرياض 8292-13521 المملكة العربية  
السعودية

رؤية  
2030  
المملكة العربية السعودية  
KINGDOM OF SAUDI ARABIA

Amit Yadav  
THE RED SEA DEVELOPMENT COMPANY

Final (WF-006962) R02I16C03 - [Masah] - Company Pre...  
WORKFLOW TRANSMITTAL

10/13/2022  
TRS02I16-WTRAN-025733



MAIL TYPE	MAIL NUMBER	REFERENCE NUMBER
Workflow Transmittal	TRS02I16-WTRAN-025733	TRS02I16-WTRAN-025733

### Final (WF-006962) R02I16C03 - [Masah] - Company Prequalification for Steel Structure Works of ATT Building - Delta Steel Est. for Contracting

From: Mr Amit Yadav - The Red Sea Development Company

To (12): Mr Enrico Purugganan - AECOM (+11 more...)

Cc (6): Mr Ossama Wahdan - The Red Sea Development Company (+5 more...)

Sent: Thursday, October 13, 2022 12:31:30 PM AST (GMT +03:00)

Status: N/A

DOCUMENT ATTACHMENTS (1)

(0 selected)				
File	Document No	Revision	Title	Status
	R02-I16C03-MCC-PRQ-CI-0019	00	Company Prequalification for Steel Structure Works of ATT Building - Delta Steel Est. for Contracting	Accepted with Comments

ATTRIBUTES

Attribute 1: Airside

MESSAGE

Workflow Review History

The attached documents have completed the "R02I16C03 - [Masah] - Company Prequalification for Steel Structure Works of ATT Building - Delta Steel Est. for Contracting" workflow with the following results :

*This transmittal was automatically generated.*

Doc No	Step	Participant	Review Outcome	Comments
R02-I16C03-MCC-PRQ-	Supervision Consultant	E Purugganan	Accepted	



MAIL TYPE  
Workflow Transmittal

MAIL NUMBER  
AMA03007-WTRAN-006004

REFERENCE NUMBER  
AMA03007-WTRAN-006004

## Final (WF-001796) 007C21\_MCC\_AMA\_Civil – Prequalification for Composite Columns and Structural Steel Fabrication- Delta Steel


From Mr Mathew Bailey - RSG- Amaala Destination

To (12) Mr Abdul Matin - Masah Specialized Construction Co. (+11 more...)

Sent Tuesday, 14 November 2023 9:34:25 AM AST (GMT +03:00)

Status N/A

### DOCUMENT ATTACHMENTS (1)

File	Document No	Revision	Title	Status
	1TB03007-007C21-MCC-PRQ-CI-0012	C0	Prequalification for Composite Columns and Structural Steel Fabrication- Delta Steel	Accepted with Comments

### MESSAGE



#### Workflow Review History

The attached documents have completed the "007C21\_MCC\_AMA\_Civil – Prequalification for Composite Columns and Structural Steel Fabrication- Delta Steel" workflow with the following results :

*This transmittal was automatically generated.*

Doc No	Step	Participant	Review Outcome	Comments
1TB03007-007C21-MCC-PRQ-CI-0012	RSG_DC_Check	S Raza	Rejected	QA Rejected: Incorrect workflow template used for pre-qualification, kindly reissue via construction technical workflow template
	RSG_Lead_Review	J Potgieter	Accepted	
	RSG_SUS_Review	R Sharma	Accepted	1. No objection.
	RSG_Package_Lead	M Bailey	Accepted with Comments	Accepted in principle - however acceptance does not forfeit contractor (MCC)

## Transmittal of Documents

<b>Employer:</b> 	<b>Engineer:</b> <div style="font-size: 2em; font-weight: bold; text-align: center;">dar</div>	<b>Contractor:</b> <div style="display: flex; align-items: center;"> <div style="margin-right: 10px;"> <b>MASAH</b>  <small>Specialized Construction Co.</small>  <small>شركة ماسح</small>  <small>للمقاولات المتخصصة</small> </div>  </div>		
<b>Proj. No. :</b> <b>S20006-KDR20-TMC-Knock Down and Rebuild (KDRB_2020) Fuel Station</b>	<b>Station No.</b> <div style="text-align: center; font-weight: bold;">0000</div>	<b>Station Name</b> <div style="text-align: center;">General</div>	<b>Building Designation</b> <div style="text-align: center; font-weight: bold;">ZZ</div>	<b>Transmittal No. Rev</b> <div style="text-align: center;">PRQ-ST-SS-0009 1</div>
<b>Date</b> <div style="text-align: right;">11/1/2022</div>				

**1. Document type**

<input type="checkbox"/> Material submittal	<input type="checkbox"/> Schedules	<input type="checkbox"/> Tests	<input type="checkbox"/> Technical sheets
<input type="checkbox"/> Manufacturer certificates	<input type="checkbox"/> Catalogues	<input type="checkbox"/> Material sample	<input checked="" type="checkbox"/> Other

**2. Submittal details**

Item no.	Description of items submitted/ quantity	Ref.	Contract doc. Ref. & compliances
1	Prequalification Documents for Steel Structure and Metal Fabrications - Delta	Div-5	050513, 051200, 053100, 055000

These are transmitted for:

<input type="checkbox"/> Your Information	<input checked="" type="checkbox"/> Approval	<input type="checkbox"/> Review & comment	<input type="checkbox"/> Other
---	--	---	--------------------------------

Submitted by: Engr. Mohammed Khalid Hashim      Signature: 

**3. Engineer's representative comments:** Conditional Approval

<input type="checkbox"/> Approved <input checked="" type="checkbox"/> Approved as noted <input type="checkbox"/> Revise & resubmit <input type="checkbox"/> Rejected <input type="checkbox"/> Others	<p>Further to our visit to fabrication yard, we are not able to judge the capacity of the subcontractor. However, further to the claims from Delta and Masah by photographic evidence that fabrication will be done at AISC certified workshops and that Delta has completed successful projects under Main contractor Masah, we accept on condition that the main contractor will be fully responsible for any failure/delay to the project. Accordingly Sub contractor has to submit fabrication and installation method statement. Submit QA/QC procedure that will be implemented for fabrication.</p>
--	--

Signature:       Date: 2/1/2022

Approval shall not relieve Contractor of his liabilities under the Contract or constitute authorization of any change to Contract Documents.

# AL SALAM HOSPITAL PROJECT



**EMPLOYER**

**CONSULTANT**

**MAIN CONTRACTOR**

## DOCUMENT SUBMITTAL FORM

Ref. No.:   New Submittal **Submitted For:**

Date:          Re-Submittal  For Approval  For Further Action

Previous Ref No.   For Information  For Your File

Architectural  Mechanical  Safety  Specs. No  
 Structural  Civil  Planning  BOQ item #  
 Electrical  Interior Design  Medical  Drwg. No.

**Please find enclosed the following Documents:**

No.	Document No.	Rev.	Description / Title	Code
1	ASH-ASM-AB-DOC-ARCH-AL-0096	00	Company Profile and Pre-Qualification of DELTA SYSTEMS for Metal Fabrication ( Louver ) for Service Building.	B

This is to certify that the submitted documents are in strict conformity with the contract documents. This inspection/ review does not relieve the Contractor of his responsibility under the terms & conditions of the contract nor authorize additional compensation with respect to time & cost.

Issued by ASMAEL: *[Signature]*  
 Signature: *[Signature]*  
 Date: *[Date]* Time: *[Time]*

Received by DAR  
 Signature: *[Signature]*  
 Date: *[Date]* Time: *[Time]*

**Consultant's Remarks / Comments**

\* MIS Delta systems Co. can be recommended for Metal Louver works based on the provided certificates & documents

\* Submit All ~~encl.~~ tech. documents for Approval, S.D, M.O.S, ET

\* All ~~encl.~~ documents should be updated. *[Signature]* 27.2.21

- Status**
- A Approved
  - B  Approved as noted
  - C Revise & Resubmit
  - D No Action
  - N For Information

Action by DAR  
 Signature: *[Signature]*  
 Date: *27/2/21* Time: *[Time]*

Received by ASMAEL  
 Signature: *[Signature]*  
 Date: *28 FEB 2021* Time: *10:30 AM*

C.R. 2050099278  
Al-Jubail Road,  
P.O. Box 7305 Dammam 32441  
Phone : +966 13 8085440  
Fax : +966 13 8085330  
E-mail : info@deltasystems-ksa.com  
Web : www.deltasystems-ksa.com

س.ت. ٢٠٥٠٠٩٩٢٧٨  
طريق الجبيل  
ص.ب ٧٣٠٥ الدمام ٣٢٤٤١  
تلفون : ٩٦٦ ١٣ ٨٠٨٥٤٤٠  
فاكس : ٩٦٦ ١٣ ٨٠٨٥٣٣٠  
البريد الإلكتروني : info@deltasystems-ksa.com  
الموقع الإلكتروني : www.deltasystems-ksa.com

Ref: DEL-157-23

Date:01-10-2025

## Completion certificate

**M/S: SAUDI INTERMAINT COMPANY**

VAT NO: 300420803200003

**Address: A 2613 Salah Al Din Alayoubi RD -Malaz Dist unit 2699 Riyadh 12841**

**JOB Details: SIMC Workshop Construction.**

**Site location : Intermaint Workshop – Riyadh City**

**Contract: PO2023-0404**

This is to certify that the All-civil works related civil works as below :

S.N	Description	QTY
1	Workshop Civil Works	1 PC
2	Workshop Finishing Works	1 PC

been satisfactorily executed 100% as per the above –mentioned contract

For Delta Steel Est. For contracting

Name: Hashem Mustafa

Position: operations manager



For Client **SAUDI INTERMAINT COMPANY.**

Name: <sup>Eng</sup>/Mahmoud Haroun

Position: G/M

Date: 09/11/2025

Signature: 

Stamp





30<sup>th</sup> of Nov 2023

## JOB COMPETITION CERTIFICATE

Project Name: Fabrication of complete Uni poles  
Project complete Date: 30<sup>th</sup> of October 2023  
Purchase Order: P002302646

This is to certify that All Fabrication of Unipoles Materials has been completed and delivered successfully to the First GULF company (FGC) as per below details:

No.	Description	Unit	Quantity
Fabrication of Four H-Shape Unipoles in Four Selection Saudi Aramco Industrial Area At:			
1	1. <i>Munirah Road- Near Dana Gate</i> 2. <i>Dhahran Boulevard</i> 3. <i>Dallah Road - near Ithra Gate</i> 4. <i>Al- Midra Road - near Al- Midra Gate</i>	EA.	4

Delta Steel Est. For Contracting has built the four Unipoles in accordance with Saudi Aramco standard 12-SAMSS - 007 and met all Saudi Aramco inspection procedures.

First Gulf Company  
Project Manager



مؤسسة مثلث الحديد للمقاولات  
DELTA STEEL EST. FOR CONTRACTING



**DELTA**  
**SYSTEMS**

C.R. 2050099278  
Al-Jubail Road,  
P.O. Box 7305 Dammam 32441  
Phone : +966 13 8085440  
Fax : +966 13 8085330  
E-mail : info@deltasystems-ksa.com  
Web : www.deltasystems-ksa.com

س.ت. ٢٠٥٠٠٩٩٢٧٨  
طريق الجبيل  
ص.ب ٧٣٠٥ الدمام ٣٢٤٤١  
تلفون : ٩٦٦ ١٣ ٨٠٨٥٤٤٠  
فاكس : ٩٦٦ ١٣ ٨٠٨٥٣٣٠  
البريد الإلكتروني : info@deltasystems-ksa.com  
الموقع الإلكتروني : www.deltasystems-ksa.com

Ref: DEL-00102-22

Date: 18-02-2024

### Completion certificate

**M/S: Industrial chemicals & Resins Co.**

**Address: P.O. Box 7952 Dammam 31472, Kingdom of Saudi Arabia**

**Phone: +966 138122088, Fax: +966 138121995**

Att:

**JOB Details: Fabrication & erection of the process tower for the plant expansion in 3th industrial city**

This is to certify that the total job and work as below table:

1-	Shed fabrication and erection of process tower including flowing works 360 / Ton  Fabrication all works , shed all fitting included , stairs , crane beams , base plate required , lift cage fabrication , floor covering , concrete flowing area , support pipe rack , boiler room shed ... etc
2	Corrugated Shinko sheet cover to all plant area 2700 m2

have been satisfactorily executed 100 % as per the above –mentioned contract

For Delta Steel Est. For contracting

Name: Khaled Riaydh

Position: General Manager

Date: 18-02-2024

Stamp

For Client: **Industrial chemicals & Resins Co.:**

Name: *Ganesh Rajagopal*

Position: *Maintenance Manager.*

Date: *24-02-2024*

Stamp



مؤسسة مثلث الحديد للمقاولات  
DELTA STEEL EST. FOR CONTRACTING



**DELTA**  
**SYSTEMS**

C.R. 2050099278  
Al-Jubail Road,  
P.O. Box 7305 Dammam 32441  
Phone : +966 13 8085440  
Fax : +966 13 8085330  
E-mail : info@deltasystems-ksa.com  
Web : www.deltasystems-ksa.com

س.ت. ٢٠٥٠٠٩٩٢٧٨  
طريق الجبيل  
ص.ب ٧٣٠٥ الدمام (٣٢٤٤١)  
تلفون : ٩٦٦ ١٣ ٨٠٨٥٤٤٠  
فاكس : ٩٦٦ ١٣ ٨٠٨٥٣٣٠  
البريد الإلكتروني : info@deltasystems-ksa.com  
الموقع الإلكتروني : www.deltasystems-ksa.com

Ref: DEL-0034-03-22

Date:05-09-2022

### Completion certificate

**M/S: INDUTRAIL CHEMICAL & RESINS CO LTD**

**Address:** 2nd Industrial City, Dammam-31472, Saudi Arabia

**JOB Details: Erection works of steel members for storage by Kirby steel factory**

**Contract:** DEL-002 DATE 19-03-2022

This is to certify that the **Erection works of steel members for storage by Kirby steel factory:**

Storage height max = 11.3m

- Length =69m, width = 38m
- Total built up area = 2245 m<sup>2</sup>

Note: this offer include erection works of steel members provided by Kirby only

Have been satisfactorily executed 100 % as per the above –mentioned contract

For Delta Steel Est. For contracting

Signature

Name: Hashem Mustafa

Position: operations manager

Date:05-09-2022

For Client: **INDUTRAIL CHEMICAL & RESINS.**

Signature:

Name: **Ganesh Rajagopal**

Position: **Assistant Manager**

Date: **11.09.2022**

Stamp



مؤسسة مثلث الحديد للمقاولات  
DELTA STEEL EST. FOR CONTRACTING



C.R. 2050099278  
Al-Jubail Road,  
P.O. Box 7305 Dammam 32441  
Phone : +966 13 8085440  
Fax : +966 13 8085330  
E-mail : info@deltasystems-ksa.com  
Web : www.deltasystems-ksa.com

س.ر.ت ٢٠٥٠٠٩٩٢٧٨  
طريق الجبيل  
ص.ب. ٧٣٠٥ الدمام ٣٢٤٤١  
تلفون : +٩٦٦ ١٣ ٨٠٨٥٤٤٠  
فاكس : +٩٦٦ ١٣ ٨٠٨٥٣٣٠  
البريد الإلكتروني : info@deltasystems-ksa.com  
الموقع الإلكتروني : www.deltasystems-ksa.com

Ref: DEL-0012-02-21

Date: 08-05-2021

**Completion certificate**

**M/S: Ismael general contracting Est.**

**Address: P.O. Box 1437 AL Khobar 31952, Kingdom of Saudi Arabia**

**Phone: +966 138951571/8894080, Fax: +966 138984448**

**Att: Mr. Atif Salem -General Manager**

**JOB Details: fabrication & installation of louver support Steel at Aslam Hospital-Khobar**

**Contract date 22-02-2021**

This is to certify that the **fabrication & installation of louver support Steel structure at Aslam Hospital on fourth floor as: Main beams: IPE220, Horizontal beams: IPE220, COLUMNS: HEA100, Bracing angle: L60x60x6, L100x100x10, Plates thick 16, 20 ,25 and Total Weight: 55 Ton**

**have been satisfactorily executed 100 % as per the above –mentioned contract**

For Delta Steel Est. For contracting

Signature

Name: Hashem Mustafa

Position: Operations manager

Date: 08-05-2021

Stamp



For Client: **Ismael general contracting Est.**

Signature:

Name:

Position:

Date:

Stamp

**Ahmed Hassan.**  
**Project Manager**



مؤسسة مثلث الحديد للمقاولات  
DELTA STEEL EST. FOR CONTRACTING



C.R. 2050099278  
Al-Jubail Road,  
P.O. Box 7305 Dammam 32441  
Phone : +966 13 8085440  
Fax : +966 13 8085330  
E-mail : info@deltasystems-ksa.com  
Web : www.deltasystems-ksa.com

س.ت. ٢٠٥٠٠٩٩٢٧٨  
طريق الجبيل  
ص.ب ٧٣٠٥ الدمام ٣٢٤٤١  
تلفون : ٩٦٦ ١٣ ٨٠٨٥٤٤٠  
فاكس : ٩٦٦ ١٣ ٨٠٨٥٣٣٠  
البريد الإلكتروني : info@deltasystems-ksa.com  
الموقع الإلكتروني : www.deltasystems-ksa.com

Ref: DEL-0036-08-10

Date: 08-11-2020

**M/S: Masah Specialized Construction**

**Address: P.O. Box 272000 Riyadh 11352, Kingdom of Saudi Arabia**

**Phone: +966 011 216 7854, Fax: +966 011 216 7853**

Att: Eng. Yousef Ali

**JOB Details: Steel structure for RAMP, BMU and Upper Roof**

Purchase order Number: AN-MOOSA-098A-20

This is to certify that the fabrication, supply and installation of steel structure of RAMP ,BMU and upper Roof steel structure have been satisfactorily executed 100 % as per the above –mentioned purchase order Number .

For Delta Steel Est. For contracting

Signature

Name: Hashem Mustafa

Position: operations manager

Date: 08-11-2020

Stamp



For Client: **Masah Specialized Construction**

Signature:

Name: Mohammed Inayat-Abi

Position:

Date:

Stamp





Date: - 31-01-2021

**TO WHOM IT MAY CONCERN**

This is to certify that Delta Steel for Contracting worked as sub-contractor for MASAH Specialized Construction Co. in following areas

- 1- Structural Steel work 250 Ton
- 2- Decorative Stainless Steel and Aluminum Screens.

MASAH Specialized Construction

Mr. Khalid El Eidan

Operation Manager

Signature: .....

*Handwritten signature of Khalid El Eidan*



مؤسسة مثلث الحديد للمقاولات  
DELTA STEEL EST. FOR CONTRACTING



C.R. 2050099278  
Al-Jubail Road,  
P.O. Box 7305 Dammam 32441  
Phone : +966 13 8085440  
Fax : +966 13 8085330  
E-mail : info@deltasystems-ksa.com  
Web : www.deltasystems-ksa.com

سنة ٢٠٥٠٠٩٩٢٧٨  
طريق الجبيل  
ص.ب ٧٣٠٥ الدمام ٣٢٤٤١  
تلفون : ٩٦٦ ١٣ ٨٠٨٥٤٤٠  
فاكس : ٩٦٦ ١٣ ٨٠٨٥٣٣٠  
البريد الإلكتروني : info@deltasystems-ksa.com  
الموقع الإلكتروني : www.deltasystems-ksa.com

Ref: DEL-0063-12-20

Date: 30-01-2021

### Completion certificate

**M/S: Masah Specialized Construction**

**Address: P.O. Box 272000 Riyadh 11352, Kingdom of Saudi Arabia**

**Phone: +966 011 216 7854, Fax: +966 011 216 7853**

Att: Eng. Yousef Ali.

**JOB Details: Supply and install power Coated aluminum louvers in parking area at Ajdan tower -Khobar city**

Purchase order Number: **AN-AJDR-1259-R1-20**

This is to certify that **Supply and install power Coated aluminum louvers. Fabricated from aluminum rectangle tube 80x40 frame 1.0mm Thick. And aluminum louvers profile 1.0mm thk. Color: Jotun Color Code :8094, have been satisfactorily executed 100 % as per the above attached purchase order Number with difference sizes as mentioned on the Po and site requirements.**

For Delta Steel Est. For contracting

Signature

Name: Hashem Mustafa

Position: operations manager

Date: 30-01-2021

Stamp



For Client: **Masah Specialized Construction**

Signature

Name: **ABRAR NAZEER**

Position: **Procurement Engineer**

Date:

**30-01-2021**

Stamp



مؤسسة مثلث الحديد للمقاولات  
DELTA STEEL EST. FOR CONTRACTING



C.R. 2050099278  
Al-Jubail Road,  
P.O. Box 7305 Dammam 32441  
Phone : +966 13 8085440  
Fax : +966 13 8085330  
E-mail : info@deltasystems-ksa.com  
Web : www.deltasystems-ksa.com

س.ت. ٢٠٥٠٠٩٩٢٧٨  
طريق الجبيل  
ص.ب ٧٣٠٥ الدمام ٣٢٤٤١  
تلفون : ٩٦٦ ١٣ ٨٠٨٥٤٤٠  
فاكس : ٩٦٦ ١٣ ٨٠٨٥٣٣٠  
البريد الإلكتروني : info@deltasystems-ksa.com  
الموقع الإلكتروني : www.deltasystems-ksa.com

Ref: DEL-0050-10-20

Date: 05-06-2021

### Completion certificate

**M/S: Masah specialized construction**

**Address: P.O. Box 272000 Riyadh 11352 , Riyadh, Saudi Arabia**

Att: Eng. Mohamad Yousef Ali

**JOB Details: Supply & Installation of Aluminum Wall & Stainless Steel Grating, Planter Boxes**

**Purchase order Number: AN-AJDR-1137-R1-20**

This is to certify that **Supply & Installation of Aluminum Wall & Stainless Steel Grating, Planter Boxes** have been satisfactorily executed 100 % as below table:

S.No.	ITEM DESCRIPTION	UNIT	QTY
1	Aluminum feature wall with laser cut. Fabricated from Aluminum 10mm thk powder coated Finish light grey.	m <sup>2</sup>	52
2	Stainless steel Grating Fabricated from SS grade 316 L satin finish 1.5 mm with farm 40x40 As Drawing	m <sup>2</sup>	37
3	Stainless steel planter box Fabricated from SS grade 316L 1,5mm thk Satin finish Size : 600 x 600	Pcs	16
4	Stainless steel planter box Fabricated from SS grade 316L 1,5mm thk Satin finish . Size : 100 x 100	Pcs	10

For Delta Steel Est. For contracting

Signature

Name: Hashem Mustafa

Position: operations manager

Date: 05-06-2021

Stamp



For Client: Masah specialized construction

Signature:

Name:

Position:

Date:

Stamp



807



مستشفى المواسي التخصصي  
Almoosa Specialist Hospital

Date: 01-02-2021

Ref.: 001-A001-CONT-DSEC-2021

**M/S: Delta Steel Est. for Contracting.**

**Atty.: Hashem Mustafa, Sales operation manager.**

**PO Box: 7305 Dammam 32441, Kingdom of Saudi Arabia**

**From: Project Management Department, Almoosa Specialist Hospital.**

**Subject: Approved Vendor Letter**

Dear Sir,

To Whom It May Concern, please be informed that Delta steel company is included in Al Moosa Hospital Vendor list as a steel structure fabricator and installer. This certificate was given to them due to their outstanding performance shown during the project lifecycle, completing the work in timely manner with highest standards of quality.

The carried out activities in the north tower are as follows:

- 1- Metal connection bridge: Built up Area 50m<sup>2</sup>, with total weight of 26.0 Ton
- 2- Extension of Steel floor deck slab in Mezzanine floor: Built up area 350 m<sup>2</sup>, with total weight of 45.0 Ton
- 3- Steel structure wok for the upper roof: built up Area 600m<sup>2</sup> with total weight of 130.0 Ton.
- 4- BMU steel structure with total weight of 90.0 Ton and RAMP works with total weight 50 ton.
- 5- Cooling tower steel structure support with built up area 100m<sup>2</sup> , and total weight of 28 Ton

We take this opportunity to show our grateful for Delta steel Structure Company and looking forward for a new cooperation in the upcoming projects and with them all success in their future endeavor.

Best Regards,

Eng. Saad Almoosa

AMSH Client Representative

Al Moosa Specialist Hospital  
Project Management Department

AFMA0015





"Safety for People, the Environment,  
Plant and Machinery"

# BARTEC

**Bartec Middle East FZE**

HB-01/RA-08, Jebel Ali Free Zone

P.O. Box 17830

Dubai, United Arab Emirates

Tel: +9714 - 8876-162

Fax: +9714 - 8876-182

E-mail: [bartec@bartec.ae](mailto:bartec@bartec.ae)

Webpage: [www.bartec-group.com](http://www.bartec-group.com)

**Date: 18/ 03/2019**

**To: Delta Steel Est For Fabrication Works  
Dammam  
Saudi Arabia**

**Attn: Engr Hashem Mustafa**

This letter is to confirm that we worked with **Delta Steel Est For Fabrication Works**, Dammam Saudi Arabia and found them very supportive and professional.

Best Regards



Mohammed Shabir  
Sales Director- ESS  
Middle East

**BARTEC** Middle East FZE

Jebel Ali Free Zone, HB01, P.O. Box 17830, Dubai, UAE

Tel: 00971 4 805 9953

Mobile(UAE):00971 50 375 4875



## شهادة تسجيل فرع مؤسسة فردية

### Branch Of Individual Establishment Registration Certificate

الرقم الموحد : ٧٠١٤٢٠٩٦٢٦  
رقم المنشأة : ٢٠٥٠٠٩٩٢٧٨  
التاريخ : ١٤٣٥/٠٦/٠٣ هـ

إسم التاجر: خالد بن رياض بن محمد الجبرودي

الجنسية : سعودي

تاريخ الميلاد : ١٣٩٣ هـ

رقم السجل المدني/ بطاقة الأحوال: ١٠٣٤٨٥٠٤٠٢

تاريخه : ١٤٠٨/٠٣/٠٥ هـ

مصدره: الخبر

مركزها الرئيسي : الجبيل

هاتف :

الرمز البريدي :

ص. ب :

رقم سجل المركز الرئيسي: ٢٠٥٥٠٠٤٩٦٢

الإسم التجاري للفرع: مؤسسة مثلث الحديد للمقاولات

العنوان : ٣٨٤٥، الشارقة، الفيحاء، ٧٣٠٥

هاتف :

الرمز البريدي :

ص. ب :

النشاط : للاطلاع على بيانات الأنشطة الرجاء مسح الرمز التجاري

رأس المال : ١٠٠,٠٠٠

عشرة آلاف ريال فقط لا غير

إسم المدير أو الوكيل المفوض : خالد بن رياض بن محمد الجبرودي

الجنسية : سعودي

تاريخ الميلاد: ١٣٩٣ هـ

١٣٩٣ هـ

رقم السجل المدني - الإقامة: ١٠٣٤٨٥٠٤٠٢

تاريخه :

١٤٠٨/٠٣/٠٥ هـ

مصدره: الخبر

سلطات المدير:

يشهد مكتب السجل التجاري بمدينة : الدمام

بأنه تم تسجيل فرع المؤسسة المذكورة أعلاه بمدينة : الدمام

وتنتهي صلاحية الشهادات في : ١٤٤٧/٠٤/٠٣ هـ

بموجب الإيصال رقم : ٥٧٢٣٢٦٤

٥٧٢٣٢٦٤

وتاريخ : ١٤٤٢/٠٤/٠٤ هـ





نشهد بأن This is to certify that

مؤسسة مثلث الحديد للمقاولات

DELTA STEEL EST. FOR CONTRACTING

عضو في الغرفة التجارية Is a member in the chamber

Certificate Date	14/08/2024 - 10/02/1446	تاريخ طباعة الشهادة
Date of Membership	07/04/2014 - 07/06/1435	تاريخ الاشتراك
Date of Expiry	25/09/2027 - 24/04/1449	تاريخ الانتهاء
Subscription Status	فعال	حالة الاشتراك
NUN	7014209626	رقم المنشأة الموحد
Membership No	119805	رقم الإشتراك
Membership Degree	الثالثة	درجة الإشتراك
Commercial Record/ License	2050099278	الرخصة / السجل التجاري
P. O. Box	7824	صندوق البريد

التوقيع  
عبدالعزیز بن سعد المعمر  
مدير إدارة المشتركين والفروع





1042359529



TIN ٣٠٠٨٠٧٢٥٧٦ الرقم المميز  
Certificate No. ١٠٤٢٣٥٩٥٢٩ رقم الشهادة  
Issue Date ١٤٤٦/٠١/٠٢ هـ تاريخ الاصدار

هيئة الزكاة والضريبة والجمارك  
Zakat, Tax and Customs Authority

المملكة العربية السعودية  
Kingdom of Saudi Arabia

## شهادة Certificate

The Zakat, Tax and Customs

Authority certifies that the Taxpayer

تشهد هيئة الزكاة والضريبة

والجمارك أن المكلف /

مؤسسة دلتا الشامل للمقاولات العامة

Entity Unified No. / ID No.

١٠٣٤٨٥٠٤٠٢

الرقم الموحد للمنشأة / رقم هوية

Commercial Registration/License/  
Contract No

٢٠٥٥٠٠٤٩٦٢

سجل تجاري / رخصة / عقد رقم

Has submitted his tax return for the period ending on 12/01/2024 AD, and he was granted the certificate to complete all his transactions including the payment of the final amount due on the contract.

The Certificate is valid until 30/10/1446 AH corresponding to 28/04/2025 AD

( The thirtieth of Shawwal one thousand four hundred forty-six Hijri )

قدم إقراره عن الفترة المنتهية في ١٤٤٥/٠٦/٣٠ هـ ، وقد منح هذه الشهادة لإنهاء جميع معاملاته بما في ذلك صرف مستحقاته النهائية عن العقود.

يسري مفعول هذه الشهادة حتى تاريخ ١٤٤٦/١٠/٣٠ هـ الموافق ٢٠٢٥/٠٤/٢٨ م

( الثلاثون من شوال ألف وأربعمائة وستة وأربعون هجري )

لا يعتد بهذه الشهادة إلا بعد التحقق من موقع الهيئة الإلكتروني: [www.zatca.gov.sa](http://www.zatca.gov.sa)

This certificate is not valid until verified by the Authority's Website: [www.zatca.gov.sa](http://www.zatca.gov.sa)





TIN 3008072576 الرقم المميز  
Certificate No. 100241106902514 رقم الشهادة  
Certificate date 20/07/2023 تاريخ الشهادة



هيئة الزكاة والضريبة والجمارك  
Zakat, Tax and Customs Authority

المملكة العربية السعودية  
Kingdom of Saudi Arabia

## شهادة تسجيل في ضريبة القيمة المضافة VAT Registration Certificate

تشهد هيئة الزكاة والضريبة والجمارك بأن المكلف أدناه مسجل في ضريبة القيمة المضافة بتاريخ ٢٠/٠٧/٢٠٢٣ م  
The Zakat, Tax and Customs Authority certifies that taxpayer below is VAT registered on 20/07/2023 AD

Taxpayer Name	مؤسسة دلتا الشامل للمقاولات العامة	اسم المكلف
VAT Registration Number	300807257600003	رقم التسجيل الضريبي
Effective Registration Date	2018/01/01	تاريخ نفاذ التسجيل
Taxpayer Address	الجبيل، الجبيل الب، الدخل المحدود، 35514	عنوان المكلف
CR / License Contact / ID No	2055004962	رقم السجل التجاري الرخصة / العقد / الهوية
Tax Period	ربع سنوي - Quarterly	الفترة الضريبية
First Filing due date	2018/04/30	تاريخ استحقاق أول إقرار ضريبي

**ملاحظة:** كمكلفين مسجلين في ضريبة القيمة المضافة، لا يجوز لكم تحصيل ضريبة القيمة المضافة من عملائكم قبل تاريخ نفاذ التسجيل في الضريبة. وفي حال تبين غير ذلك ستقوم هيئة الزكاة والضريبة والجمارك بتنفيذ الغرامات المستحقة

**Note:** As a VAT registered taxpayer, you are not allowed to collect VAT from your customers prior to the effective date of the tax registration. If otherwise approved, The ZAKAT, Tax and Customs Authority will impose the applicable penalties

